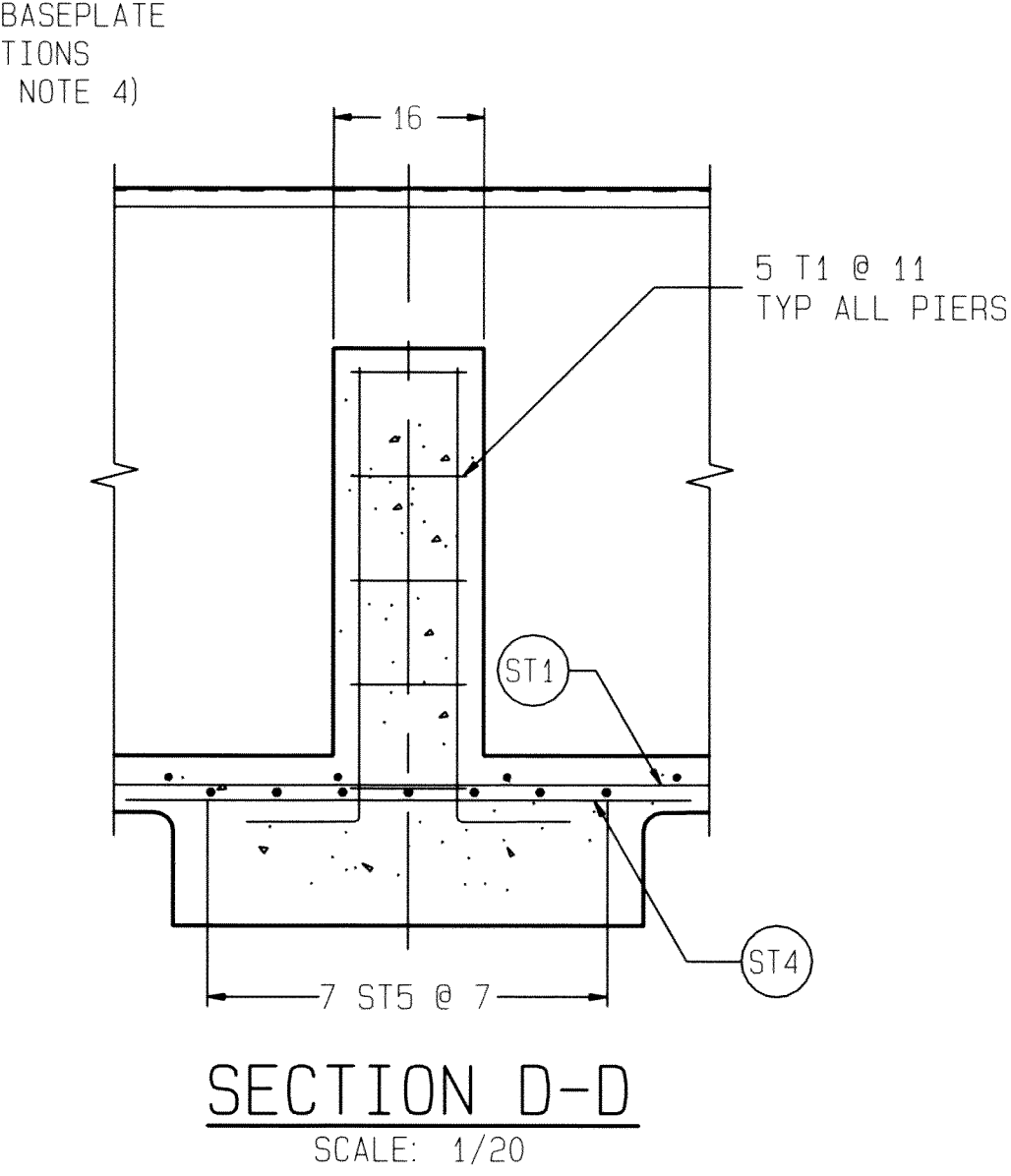
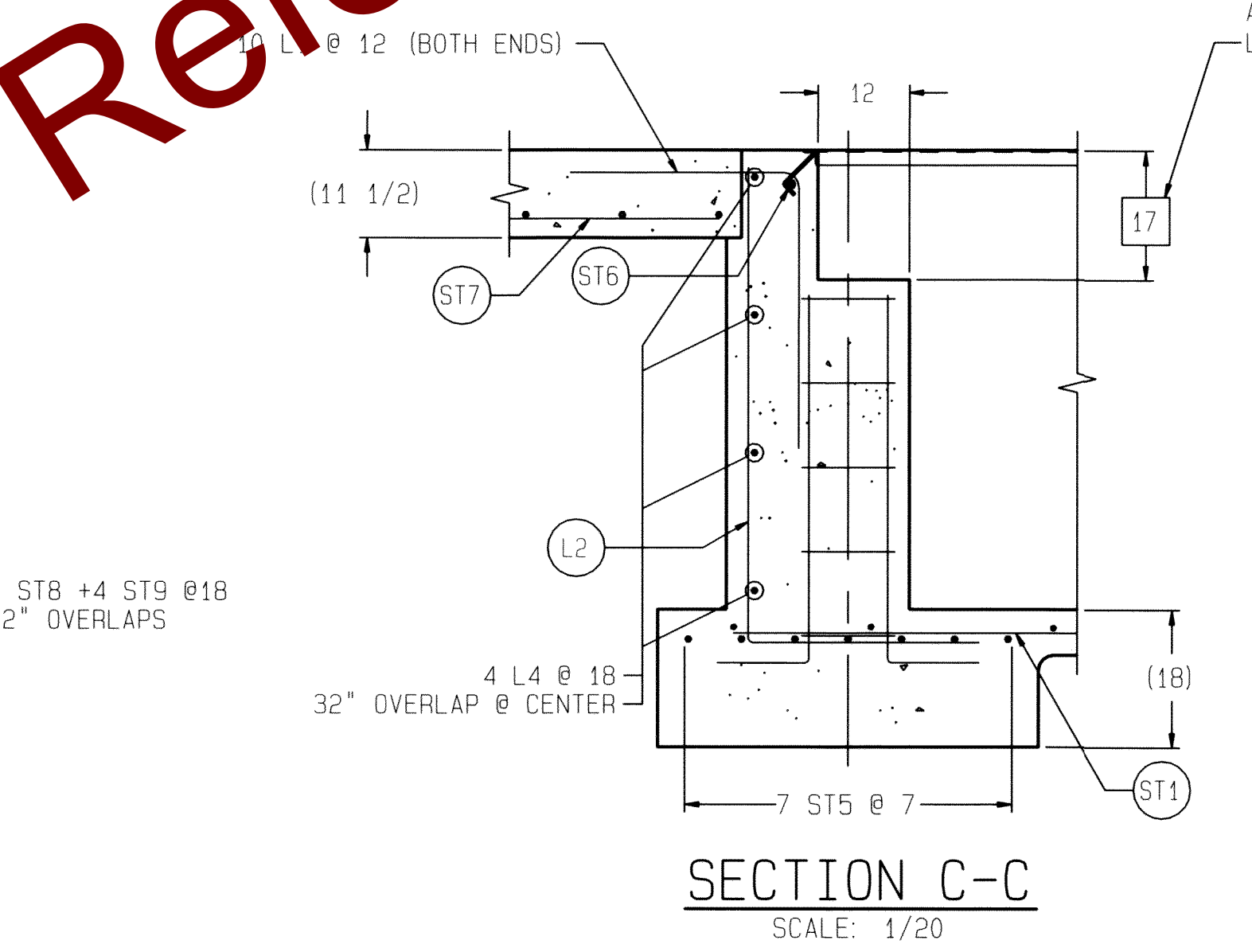
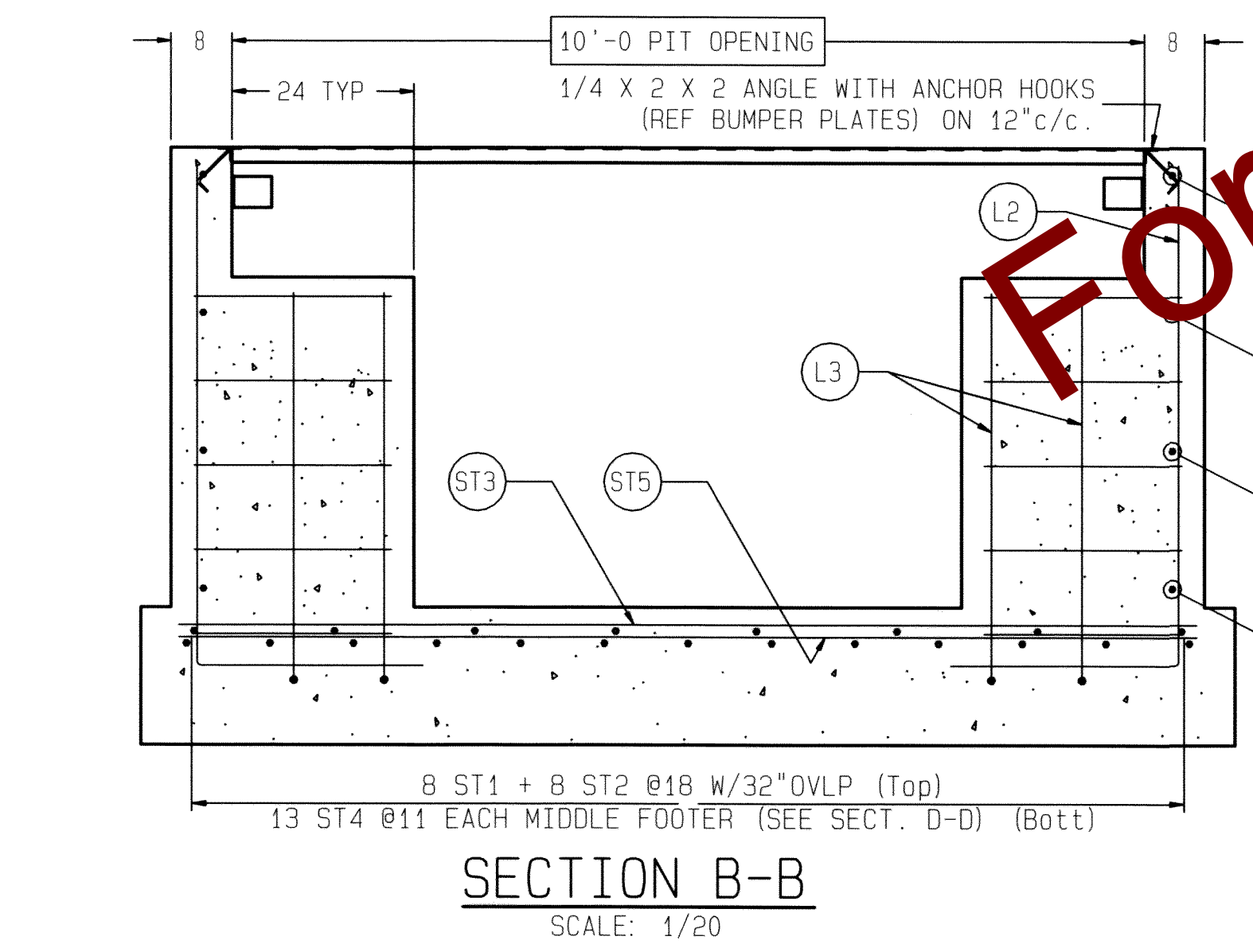


MATERIAL SUMMARY & "Y" DIMENSION CHART	
NOMINAL CLEARANCE BETWEEN FLOOR AND SCALE	4'
CONCRETE (CU. YDS.)	55
REINFORCING STEEL	3555
Y1 (SECTION A-A)	5'-0
Y2 MINIMUM (SECTION A-A)	6'-6

REINFORCING STEEL SCHEDULE (A.S.T.M. A-615 GRADE 60)						
COLD FORM BARS TO INSIDE DIMENSIONS		A				
		SYM	QTY	SIZE	LOCATION, DIRECTION	WGT
ST1	8	#4	FLOOR, LONG.	40'-0		214
				35'-10		192
ST2	8	#4	FLOOR, LONG.			
ST3	49	#4	FLOOR, LATERAL	11'-6		377
ST4	26	#4	FOOTERS, LONG.	5'-0		87
ST5	28	#5	FOOTERS, LATERAL	11'-6		336
ST6	20	#5	APPROACH, LATERAL	9'-6		199
			END WALLS, LATERAL			20
ST7	20	#5	APPROACH, LONG.	9'-6		199
ST8	8	#4	SIDE WALLS, LONG.	40'-0		214
ST9	8	#4	SIDE WALLS, LONG.	34'-4		184
L1	20	#5	APPROACH TO END TIES	2'-6	3'-0	115
L2	166	#4	WALL TO FLOOR TIES	2'-6	5'-2	851
L3	32	#5	(SEE DETAIL ITEM T1)	1'-0	4'-0	167
L4	16	#4	(CORNERS)	2'-0	6'-9	94
T1	40	#5	(SEE DETAIL ITEM T1)	7'-4		306

- NOTES:
- 1) USE MINIMUM 3000 PSI STRENGTH CONCRETE AT 28 DAYS WITH 5-7% AIR ENTRAINMENT.
  - 2) USE MINIMUM 60KSI YIELD DEFORMED REINFORCING STEEL. REBAR MINIMUM DEPTH OF COVER SHOULD BE IN ACCORDANCE WITH THE LATEST ACI BUILDING CODE REQUIREMENTS FOR STRUCTURAL CONCRETE (ACI 318-SECTION 7.7). UNLESS OTHERWISE SPECIFIED.
  - 3) FOUNDATION REQUIRES 2000 PSF RATED SOIL.
  - 4) TOP OF CONCRETE AT BASEPLATE LOCATIONS TO BE LEVEL AND IN ONE PLANE  $\pm 1/8"$
  - 5) DIAGONAL MEASUREMENTS ENDWALL TO ENDWALL MUST BE EQUAL WITHIN  $1/2"$ . THIS IS VERY IMPORTANT!! SCALE INSTALLATION WILL BE DIFFICULT OR IMPOSSIBLE IF SQUARENESS IS NOT HELD TO THIS TOLERANCE.
  - 6) BASEPLATE ANCHORS SUPPLIED BY METTLER TOLEDO. USE BASEPLATES AS TEMPLATES TO LOCATE ANCHORS DURING SCALE INSTALLATION.
  - 7) RAMP LENGTH: -PER LOCAL REGULATIONS ( $1/2"$  SLOPE PER FOOT TYPICAL)
  - 8) BOTTOM OF FOOTERS MUST BE BELOW LOCAL FROSTLINE.
  - 9) CONTRACTOR SUPPLIES:
    - EXCAVATION
    - REINFORCING STEEL
    - CURB ANGLE ASSEMBLIES (SECT B-B)
    - CONCRETE AND FORMS
    - 1 1/2" DIA CONDUIT
    - BUMPER PLATE ASSEMBLIES (VIEWS J-J & N-N)



REV	CHANGE	BY	DATE	SCALE	02	METTLER TOLEDO	
				DATE	5/12/11		
				OWN KRS	APPRO	TITLE VTS10X FOUNDATION, PIT, 70' X 9'-10, 3-MOD	
						UNLESS OTHERWISE SPECIFIED, ALL DIMENSIONS ARE IN INCHES, AND DIMENSIONAL TOLERANCES ARE: FRACTIONAL .XX $\pm$ .02 1/32 .XX $\pm$ .02 XXX $\pm$ .005	
						THIS PRINT IS FURNISHED WITH THE UNDERSTANDING THAT THE ESSENCE THEREOF WILL NOT BE REPRODUCED IN WHOLE OR IN PART WITHOUT WRITTEN AUTHORIZATION OF METTLER TOLEDO, INC. ALL DESIGN ARE THE PROPERTY OF METTLER TOLEDO, INC. AND WILL BE PROTECTED BY PATENTS.	
						TC208857	